

CHDC-D400AD/ADH Series

FEATURES

- 400A Contact switching capability
- Having a set of normally open/normally closed contacts
- Meet cULus,CCC Requirements (UL508 , IEC60947-4-1 , GB/T 14048.4)
- RoHS compliance
- REACH SvHC compliance



APPLICATION

Telecommunication equipment, construction machinery, battery car, Electric forklift, automobile, Train, Ship, Uninterruptible power supply and other electronic control systems.

COIL DATA @ 23°C

CHDC-D200AD/ADH					
Nominal Voltage (VDC)	Rated Power (W)	Coil Resistance (Ω)±10%	Max.working Voltage (VDC)	Operate Voltage (VDC Max.)	Release Voltage (VDC Min.)
12	8.6	16.7	14.4	9.0	1.2
24	8.6	66.7	28.8	18.0	2.4
48	8.6	267.0	57.6	36.0	4.8
60	8.6	417.5	72	45.0	6.0

CHARACTERISTICS

Operate voltage	75% of nominal voltage or less	
Release voltage	10% of nominal voltage or more	
Operate time (At nominal voltage)	≤40ms	
Release time (At nominal voltage)	≤40ms	
Closed bounce time (rated voltage)	≤8ms	
Insulation resistance	1,000 MΩ (at 500 VDC)	
Dielectric strength	Between coil and contacts	1,500 VAC, 50/60 Hz (1 Min)
	Between open contacts	1,500 VAC, 50/60 Hz (1 Min)
Rated impulse withstand voltage	Between coil and contacts	25,000V(1.2/50μs)
	Between open contacts	25,000V(1.2/50μs)
Vibration resistance	Functional	10 ~ 55 Hz, Acceleration≤2G
	Destructive	10 ~ 55 Hz, Acceleration≤5G
Shock resistance	Functional	3G Min.
	Destructive	50G Min.
Ambient temperature	Operating: -40~+70°C(without freezing or condensation)	
Storage ambient temperature	Operating: -40~+75°C (without freezing or condensation)	
Ambient humidity	5% to 95%Rh at 20°C	
Mounting Type	Bolt terminal installation (M8)	
Protection grade	IP00	
Pollution degree(94V-0 Flammability Ratings)	III(Case)	
Weight	670g	

CONTACT DATA

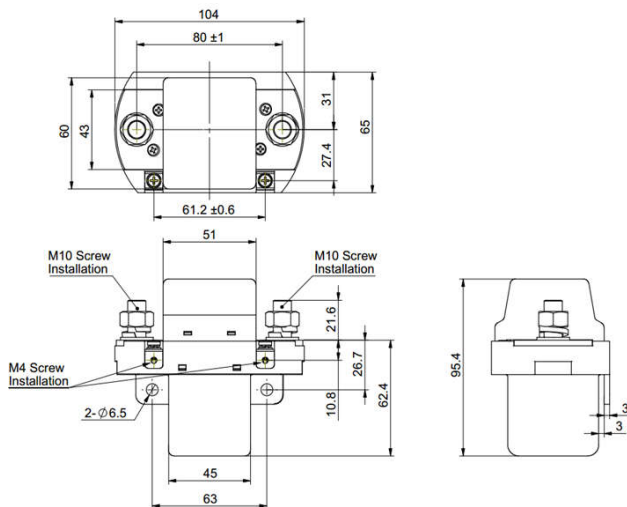
TYPE	CHDC-D400ADH
Contact arrangement	1A Bridge Form A
Contact material	Ag Alloy
Initial contact resistance	1.2mΩ Max. (6VDC,20A)
Rated insulation voltage	125VDC
Max. switching voltage	105/80VDC
Max. switching current (Resistive Load)	400A
Max. switching power	42,000W
Mechanical endurance (No Load)	100,000 ops Min.(Duty cycle:1:1)
Electrical endurance (Resistive Load)	6,000 ops Min.(Duty cycle:1:11:9)
Minimum load (reference value)	100mA@ 48VDC

Rated marking and breaking capacities	DC-1
Rated insulation voltage	DC125V
Rated impulse withstand voltage	1500V
Pollution degree	3
Rated conditional short-circuit current	Iq=Ir, 10KA

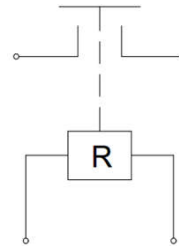
ORDERING INFORMATION

	CHDC	-1	12	D400A	D	H	,000
1. Product Family	CHDC Series						
2. Number of Poles	1=1 pole (Bridge type)						
3. Rated Coil Voltage	12,24,48,60VDC						
4. Current Frame	D400A =DC 400A Single Coil(Form A)						
5. Mounting Type	D=Vertical installation or Horizontal installation						
6. Load Voltage	H =105/80VDC contact rating						
7. Additional numbers and /or letters	000-999 , AAA-ZZZ , aaa-zzz or blank , which does not represent electrical changes, only for specific customer requirements						

OUTLINE DIMENSION



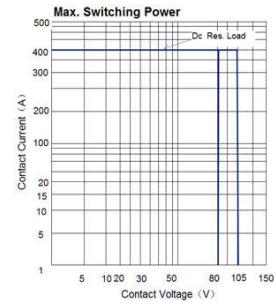
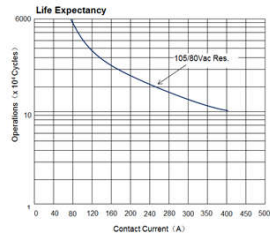
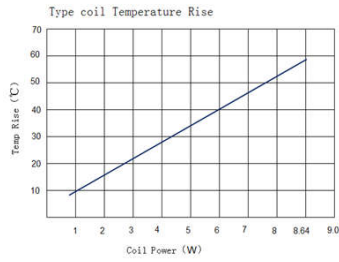
WIRING DIAGRAMS(BOTTOM VIEWS)



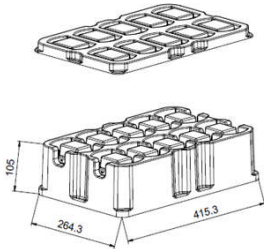
Remark:

- The reference tolerance in outline dimension: :
- outline dimension $\leq 1\text{mm}$, reference tolerance is $\pm 0.2\text{mm}$;
 - outline dimension $> 1\text{mm}$ and $\leq 5\text{mm}$, reference tolerance is $\pm 0.3\text{mm}$;
 - outline dimension $> 5\text{mm}$, reference tolerance is $\pm 0.5\text{mm}$.

特性曲线



PACKING



10 pcs inside a box
10 pcs inside a carton

Matters needing attention

- When installing contactor, the tightening torque of main circuit connection screw and nut is $8 \sim 16\text{N}\cdot\text{m}$, and the tightening torque of control circuit connection screw and nut is $1 \sim 1.5\text{N}\cdot\text{m}$.
- The starting coil power must be no less than the relay coil power. Otherwise, the relay can
- The product is non-waterproof. Avoid use in the environment where relay case or terminals may contact water, solvent, or oil.

TYPICAL MODEL

Product description		Features					
TYPE	Code	Rated Coil Voltage (VDC)	Contactmaterial	Load	Electrical endurance	Safety certification	Remarks
CHDC-1XXD400ADH	000	12,24,48,60	Ag Alloy	400A @80VDC	6,000 ops Min.	UL/cUL/CCC	
CHDC-1XXD400ADH	001	12,24,48,60	Ag Alloy	400A @80VDC	6,000 ops Min.	UL/cUL/CCC	
CHDC-1XXD400ADH	010	80	Ag Alloy	400A @80VDC	6,000 ops Min.		

Disclaimer :

The specification is for reference only,if you need more detail information,please contact Churod. We could not evaluate all the performance and all parameters for every possible application. And the user should be in a right position to choose the suitable product for their own application.If there is any new need,please contact Churod for the technical service.

[Http://www.churod.com](http://www.churod.com)

2021 Rev.00 Churod Electronics Co., Ltd.